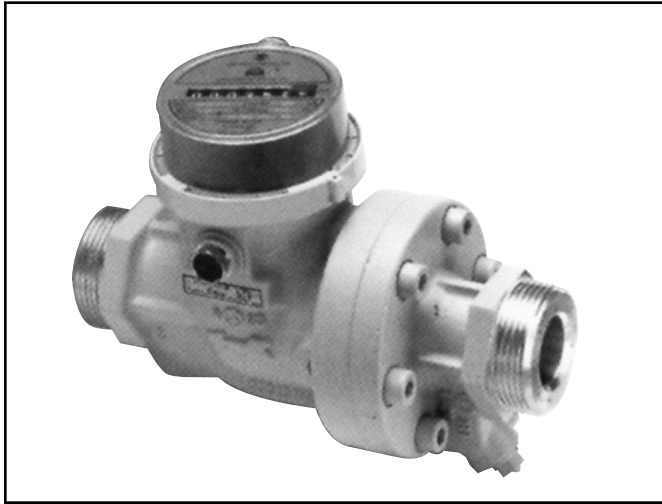


AMERICAN METER

QA Quantometer Gas Turbine Meter

Data Sheet



The American Meter Quantometer QA Series of Gas Turbine Meters is designed specifically for in-plant measurement use. The QA meter offers the ultimate in compactness and accuracy to continuously monitor and control fuel and process gas consumption. Suitable for working pressures up to 175 psig, QA Quantometers are available for line sizes one-inch through three-inch and can be supplied with either English or metric registration.

Features and Benefits

- Lightweight, aluminum construction reduces installation costs.
- Permanently lubricated bearings eliminate regular maintenance.
- Rugged mechanical index rotatable through 360° accommodates any installation requirements.
- Low- and high-frequency pulse outputs allow remote instruments to be field retrofitted at a later date.
- Direct read odometer index reduces meter reading errors.
- Vertical or horizontal mounting suitable for burner train installations.
- Great for industrial in-plant measurement of natural gas, nitrogen, and other industrial gases.
- Accuracy:
 $Q_{\min} - 0.2 Q_{\max} = \pm 3\%$
 $0.2 Q_{\max} - Q_{\max} = \pm 1.5\%$

SCFH Capacity Data

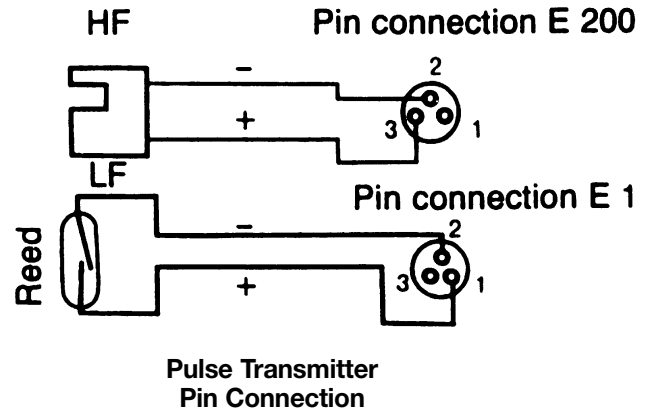
Pressure PSIG	QA10/560		QA16/880		QA25/1500		QA40/2300		QA65/3500		QA100/5600		QA160/8800		QA250/14000	
	Q min	Q max	Q min	Q max	Q min	Q max	Q min	Q max	Q min	Q max	Q min	Q max	Q min	Q max	Q min	Q max
1	25	560	45	880	75	1500	115	2300	175	3500	280	5600	440	8800	700	14000
2	30	635	50	1000	80	1705	125	2615	190	3975	310	6360	485	9990	770	15900
5	30	750	50	1180	85	2010	130	3080	200	4690	320	7505	505	11795	805	18760
10	35	940	55	1480	95	2520	145	3865	220	5880	355	9410	550	14785	880	23520
15	40	1130	60	1780	105	3030	160	4645	240	7070	390	11315	610	17780	970	28290
20	45	1320	65	2075	110	3540	170	5430	260	8260	415	13220	655	20770	1045	33050
25	45	1510	70	2375	120	4050	185	6210	285	9450	455	15125	715	23765	1135	37810
30	50	1705	75	2675	130	4560	200	6995	305	10645	485	17030	765	26760	1215	42570
40	55	2085	85	3275	145	5580	225	8560	340	13025	545	20840	855	32750	1360	52095
50	60	2465	95	3875	160	6600	245	10125	370	15405	590	24650	930	38730	1480	61620
60	65	2845	100	4470	170	7620	260	11690	395	17785	630	28460	995	44720	1500	71140
75	70	3415	105	5370	185	9155	280	14035	425	21355	685	34170	1075	53700	1710	85430
100	80	4370	120	6865	205	11705	315	17945	480	27310	770	43695	1210	68670	1930	109240
125	90	5320	135	8365	230	14255	355	21860	540	33260	865	53220	1355	83630	2160	133050
150	95	6275	150	9860	250	16805	390	25770	590	39215	940	62745	1480	98600	2355	156860
175	100	7225	160	11355	270	19355	415	29680	630	45165	1010	72265	1585	113560	2520	180670

Pulse Transmitter

Meter Model	Pulses/Unit		
	HF/E200 FT ³	LF/E1 FT ³	Fmax/E200 FT ³
QA10	500	1	78
QA16	500	1	122
QA25	500	1	210
QA40	25	.1	16
QA65	25	.1	25
QA100	2.5	.01	4
QA160	2.5	.01	6
QA250	2.5	.01	10

E200 = Inductive Proximity Switch **Note:** The E200 proximity switch must be connected to a separate WE77/EX-1, WE77/EX1-OT or equivalent switching amplifier interface circuit.

E1 = Reed Switch



Dimensional Data

Model	Figure	Inlet/Outlet Connections	A (in.)	B (in.)	C (in.)	D (in.)	Weight (lbs.)
QA10/560	1	1" FNPT	9.45	7.28	3.54	5.20	2.2
QA16/880	1	1" FNPT	9.45	7.28	3.54	5.20	2.2
QA25/1500	1	1" FNPT	9.45	7.28	3.54	5.20	2.2
QA40/2300	2	1-1/2" FNPT	7.48	4.98	5.91	7.95	4.9
QA65/3500	3	2" wafer, ANSI 150	2.36	-	5.91	7.95	3.1
QA100/5600	3	3" wafer, ANSI 150	4.72	-	5.91	8.86	11.7
QA160/8800	3	3" wafer, ANSI 150	4.72	-	5.91	8.86	11.7
QA250/14000	3	4" wafer, ANSI 150	5.91	-	6.50	9.65	15.0

Figure 1

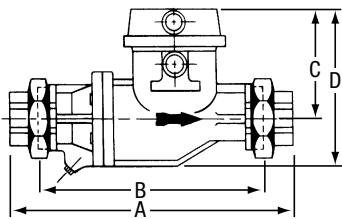


Figure 2

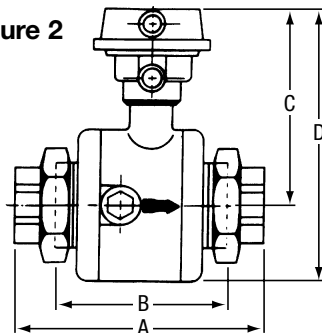
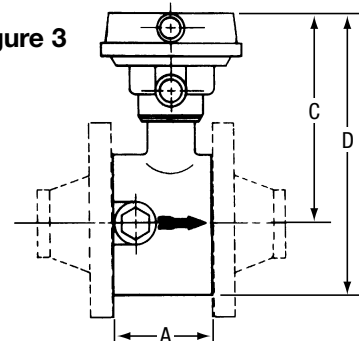


Figure 3



Ordering Information

To ensure the correct meter and complementary instrument selection are made, the following information is required:

- Type of gas to be metered.
- Maximum flow rate (SCFH or BTU/hr. at operating pressure).
- English registration.
- Maximum working pressure.
- Instrument required.



300 Welsh Road
Building One
Horsham, PA 19044-2234 U.S.A.
Phone: 215/830-1800
Fax: 215/830-1890



3037 Derry Road, West
Milton, Ontario L9T 2X6 Canada
Phone: 905/878-2361
Fax: 905/878-5758

Website: americanmeter.com

Printed in U.S.A.

ELSTER AMCO

Core - 200 - 04/02