

# AC-630 Compact Meter

## Repair Parts



[www.americanmeter.com](http://www.americanmeter.com)

**AMC Quality System**  
QMI is Accredited by:



ISO 9001 Certified  
Certificate #006697



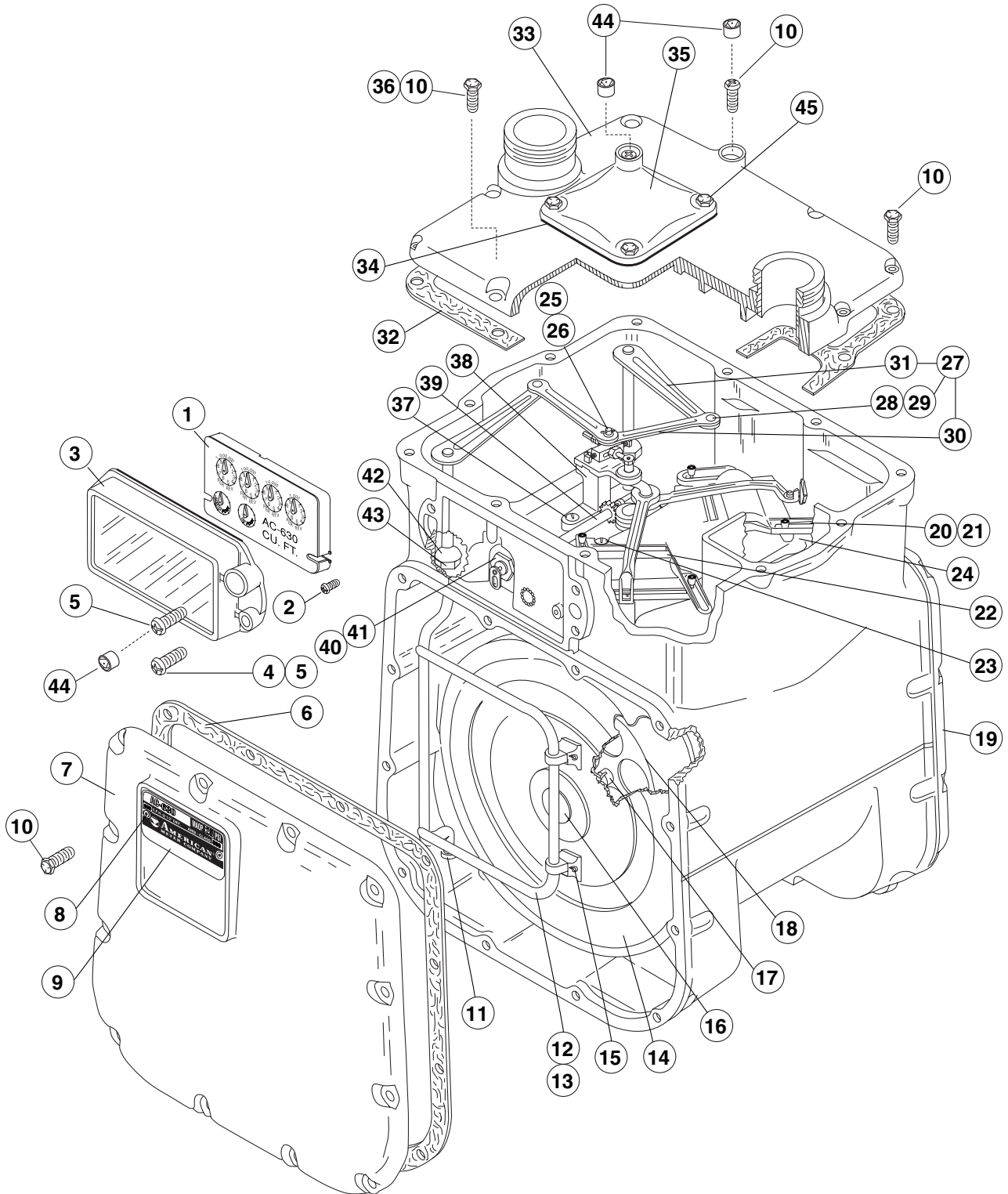
Dutch Council  
for Accreditation



**AMERICAN  
METER COMPANY**  
*Measurement Engineers Since 1836*

# AC-630 Compact Meter

## Major Component Group



# AC-630 Compact Meter

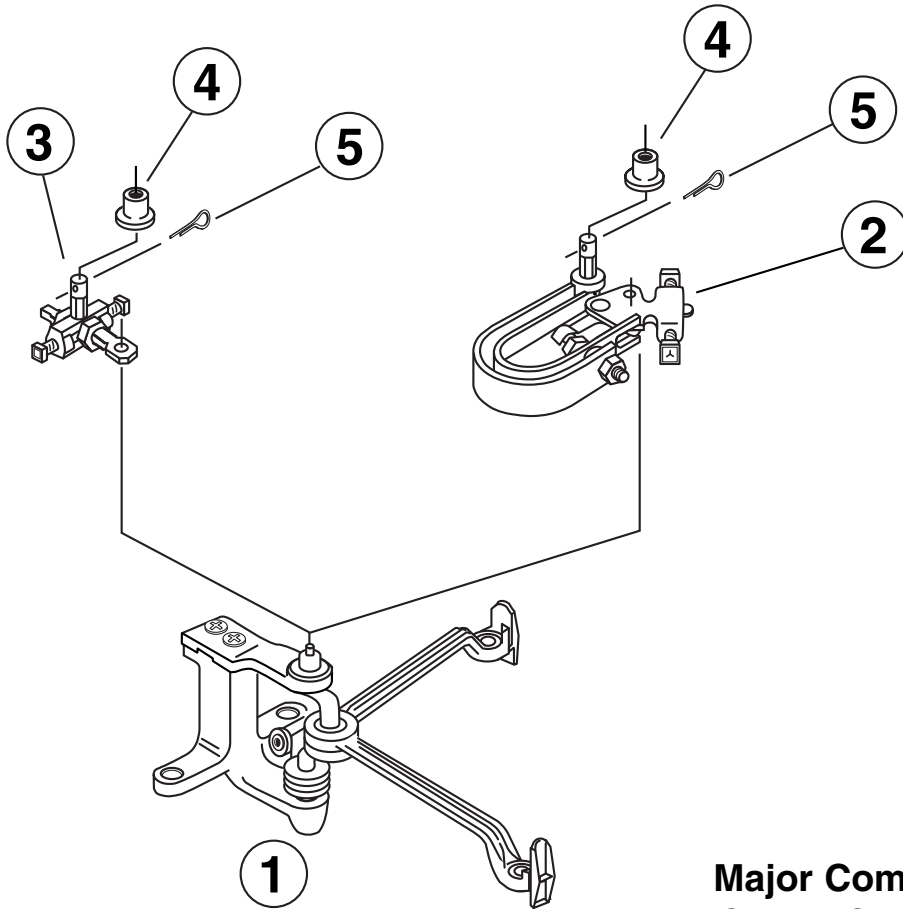
## Major Component Group

Item No.	Description				Qty. Per Unit	Part Number
1	Indexes	2 FT3	Reg. Read	w/ S.C.	1	04972G072
				w/ S.C.		04972G125
				w/ S.C. & T.C.		04972G039
			Odometer	w/ S.C. & T.C.		04972G126
				w/ S.C.		54885G006
				w/ S.C.		54885G012
		.05m3	Odometer	w/ S.C. & T.C.		54885G007
				w/ S.C. & T.C.		54885G013
				w/ S.C.		52142G014
			Odometer	w/o S.C.		52142G013
				w/o S.C.		52142G030
				w/o S.C. & T.C.		
2	Screw, Index; Rd. Hd.				2	43393P092 #8-32 x .188"
3	Box, Index	Vented		1	39865G052	
		Not Vented			39865G051	
		Vented				
4	Screw, Index Box; Fil. Hd. w/ Seal Wire				1	10347P143 1/4"-20 x .59"
5	Screw, Index Box; Combo Hd.	w/ Security Cap		4	10347P174	
		w/ Seal Wire		3	1/4"-20 x .59"	
6	Gasket, Front & Back Cover				2	44276P002
7	Cover, Front				1	44304P001
8	Rivet, Badge				A/R	94434P017
9	Badge, Mfr.	Standard		1	49036G576	
		T.C.			49036G577	
10	Screw,	Tops & Covers	Hex. Hd.	34	16423P023	
			Combo Hd.		2	10347P175
11	Bearing, Lower Flag Rod				2	44142P009
12	Rod, Front Flag - Assembly				1	44274G001
13	Rod, Back Flag - Assembly				1	44274G002
14	Diaphragm, Universal Front & Back				2	42927G147
15	Pin, Cotter; Diaphragm Bracket				4	11186P004
16	Grommet, Diaphragm Disc				2	42981P001
17	Screw, Whiz-Lock; Diaphragm				2	52040P001
						1/4"-20 x .375"
18	Gasket, Diaphragm Clamp				2	39610P096
19	Cover, Back				1	44269P001
20	Guide, Valve				4	43796P004

Item No.	Description		Qty. Per Unit	Part Number	
21	Pin, Valve Guide		4	12539P003	
22	Valve, Front		1	28873P041	
23	Screw, Valve Seat; Fil. Hd.		5	10347P004	
				1/4"-20 x .38"	
24	Valve, Back		1	28873P042	
25	Sleeve, Tangent		1	50993P002	
26	Pin, Cotter; Tangent		1	11186P036	
27	Arm, Flag Assembly (Includes Items #29 thru 32)		2	17550G062	
28	Sleeve, Flag Arm		2	55724P005	
29	Rivet		2	50657P001	
30	Arm, Short Flag		2	28736P006	
31	Arm, Long Flag		2	03743P021	
32	Gasket, Top		1	44275P002	
				44272G009	
				44272G018	
				44272G007	
				44272G011	
33	Top	1"-20 LT	1	44272G018	
		1-1/4"-30 LT		44272G007	
		1-1/2"-45 LT		44272G011	
		#3-4 Sprague			
34	Gasket, Handhole Cover		1	44320P012	
35	Cover, Handhole		1	46583P019	
36	Screw, Top; Hex Hd. w/ Seal Wire		1	16423P024	
37	Screw, Crank Frame; Rd. Hd.		2	13519P055	
				1/4"-20 x .50"	
38	Crank & Tangent Assembly		1	See Page 4	
39	Axle & Wheel	2FT3	1	44661P006	
		.05m3		44661P019	
40	Box, Axle - Assembly (Includes Item #42)	2FT3	1	42986G023	
		.05m3		42986G022	
41	Seal, Axle Box		1	42984P001	
42	Seal, Flag Box		2	42984P008	
43	Box, Flag		2	39624P020	
44	Seal, Security	Index Box	2	52548P012	
		Top & Handhole Cover		A/R	52548P012
45	Screw, Handhole Cover w/ Security Seal	Combo Hd.	1	10347P175	
		Hex. Hd.		3	16423P023
				1/4"-20 x .75"	
	Screw, Handhole Cover w/ Seal Wire	Combo Hd.	1	10347P175	
		Hex Hd.		2	16423P023
		Hex Hd. Drilled		1	16423P024

# AC-630 Compact Meter

## Crank, Crank Frame and Tangent Assemblies



### Major Component Group Crank, Crank Frame and Tangent Assemblies

Item No.	Description	Qty. Per Unit	Part Number	
1	Crank, Cr. Fr. & Tangent Assembly (Includes Items #2 thru 5)	1	2 FT3 Reg. Tan.	25276G152
			T.C. Tan.	25276G153
			.05m3 Reg. Tan.	25276G154
			T.C. Tan.	25276G155
2	Tangent, Temp. Comp. - Assembly	1	43631G002	
3	Tangent, Regular - Assembly	1	17305G039	
4	Sleeve, Tangent	1	50993P002	
5	Pin, Cotter: Tangent	1	11186P036	

*Due to continuous development the information in this document is subject to change.*



#### AMERICAN METER

300 Welsh Road, Building One • Horsham, PA 19044-2234 • USA • Tel: (215) 830-1800 • Fax: (215) 830-1890



#### CANADIAN METER

3037 Derry Road, West • Milton, Ontario L9T 2X6 • Canada • Tel: (905) 878-2361 • Fax: (905) 878-5758

**ELSTER AMCO**